

AUTOMATED TRANSFER FINISHING

CYBERPOLISH 900T SERIES



CYBERPOLISH 900T SERIES



The Cyberpolish 900T Series provides a multi-stations concept, enabling it to combine all the finishing operations, such as belt grinding, felting, polishing and buffing in a single machine. Depending on the application, the work can be performed in a wet or dry environment.

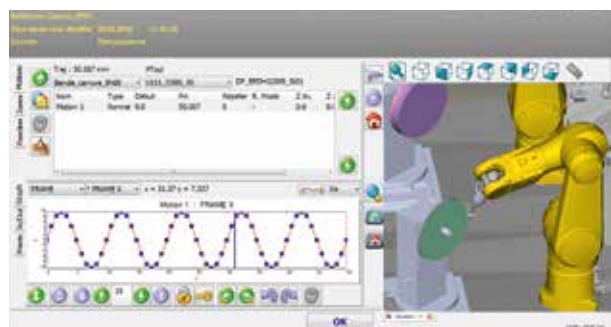
- High-productivity transfer solution with 2 or 4 stations
- Multiple operations in a single clamping system with 6 or 7 axes
- Multi-robot CyberMotion 5 software with high-precision trajectory tracking
- Single-interface trajectory creation, modification and tracking

900T SERIES	920T / 940T
Type	Grinding, lapping, belt grinding, polishing, buffing
Stations	2 / 4
Number of tools per station	1 to 2
Tool type	Belt, grinding wheel, buffer, disc, lapping plate
Loading	Manual or automatic
Fields of application	Watchmaking, electronics, medical, aeronautics, energy, etc.
Max. workpiece size	160 mm diameter sphere
Max. workpiece weight	4 kg
Robot	Stäubli TX90
Software	CyberMotion 5
Electrical supply	3x400V PE+N, 50/60 Hz, 32A, 3 kVA / 5 kVA
Noise level	< 75dB
Physical dimensions of the 4-station cell	3'100 x 2'900 x 2'600 mm / 4'000 x 4'550 x 2'700 mm
Weight	2'500 kg / 4'000 kg
Safety	The machine integrates the latest security technologies. This allows at the same time a safe and convivial work.
Options and accessories	Automated loading cell Numerically controlled spinning spindle with servo speed and position Numerically controlled station rotatable base (7th axis) Integrated measurement Carding and wireless measurement Inside walls cleaning with water curtains ATEX vacuum system Intermediate cleaning station Creation, modification and simulation on off-line station Automatic tool and station calibration Batch production monitoring and MO management Two advanced trajectory tracking modes

The CyberMotion software provides a complete solution, allowing users to concentrate on their professional knowledge. This solution offers trajectory tracking with advanced modes and production control. Trajectory creation, simulation, setting and production control can be performed on a single interface.

With CyberMotion 5, you can access a new level of performance and simplicity:

- New high-performance trajectory tracking kernel with 4 trajectory tracking modes, of which 2 are optional advanced modes
- Integrated trajectory creation and modification module
- Multi-robot control, up to 6 robots (5 working robots, one loading robot)
- On-machine or off-line simulation
- Robot axis speed validation



CyberMotion 5
High-performance trajectory tracking

